

Diagnosics Today

Curated News and Insights for the Modern Clinical Lab



Dear Julie,

Is a Standalone IgG Test Best for Your Laboratory?

With the ability to look deeply into the population's level of immunity, serology testing is a key tool to address important issues as we look to prepare for a vaccine and move past this pandemic. There are many tests on the market, however not all of them are accurate. Find out whether a **standalone IgG assay test** or a **Total IgM/IgG assay test** is right for you.

(Estimated read time: 2 minutes)

[Read blog](#)



40,000 Antibody Tests Delivered to New York City

On July 6, 2020 the first shipment of 40,000 Access SARS-CoV-2 IgG antibody tests arrived in New York City, with 20,000 additional tests anticipated each week. The Access SARS-CoV-2 IgG antibody test has been rigorously validated against more than **1,400 negative broad-based population samples** to ensure the test is specific to SARS-CoV-2.

(Estimated read time: 5 minutes)

[Learn more](#)



Crisis Preparedness: A Competitive Advantage

The global outbreak of COVID-19 illustrates the importance of preparation for a potential infectious disease pandemic. Find out why crisis preparedness is an essential component of a business continuity plan, especially for

businesses that provide critical healthcare and infrastructure services, such as your laboratory.

(Estimated read time: 2 minutes)

[Read blog](#)



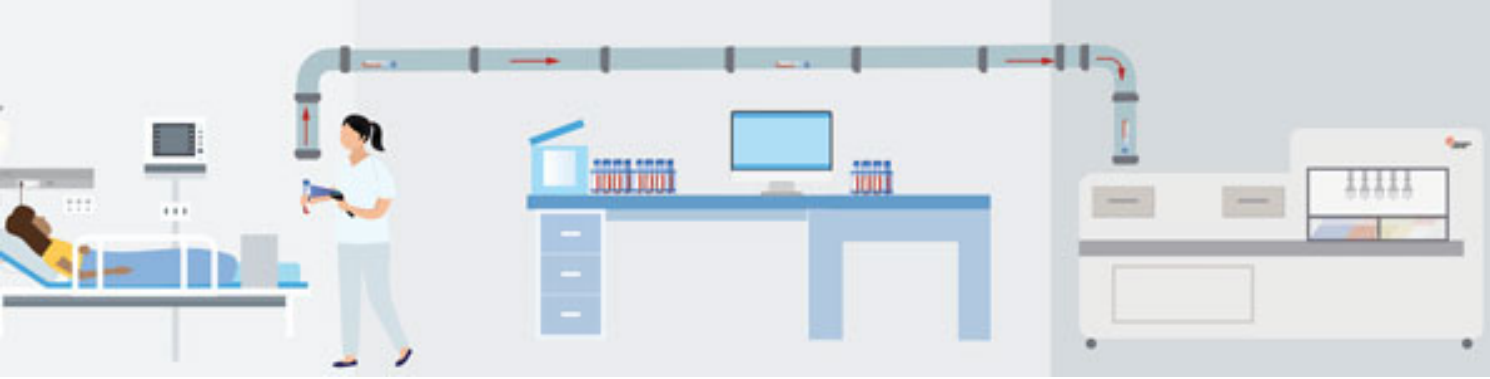
Streamlining Body Fluid Analysis

Accurate, automated body fluid cell counts that can be done with ease

Streamlining body fluid analysis is a challenge for many laboratories. If you are looking to reduce manual work while avoiding space and cost considerations of maintaining a dedicated body fluids analyzer, there is a better solution.

(Estimated read time: 3 minutes)

[Learn more](#)



Reduce Manual Steps in Your Lab

The Sample Tube Feeder connection, an enhancement to the Bulk Inlet module, gives customers an option to connect the Power Express to third-party tube transport systems, including pneumatic tube systems and band conveyer systems. This allows for **touchless introduction of samples** onto the Power Express. Learn how the most recent release of Power Express V5.0 can help achieve consistent turnaround times and drive safety improvements in your laboratory.

(Estimated read time: 3 minutes)

[Learn more](#)



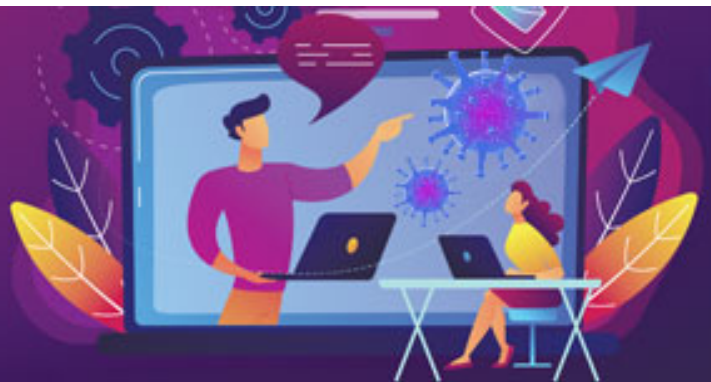
Diagnostic Laboratory Services: Optimizing Performance

Every second counts in patient care

When a laboratory instrument goes down unexpectedly, patients can lose valuable time while waiting for life-saving answers. What if you could take back control of your laboratory services, minimize the risk of unplanned downtime and ensure results are delivered on time? Discover how a proactive and predictive approach with a committed service partner can help drive efficiency and maximize performance.

(Estimated read time: 6 minutes)

[Learn more](#)



COVID-19 Pandemic Webinar Series Continues

You're INVITED! Attend our COVID-19 themed webinar series

Join our webinar series exploring topics such as current testing methodologies, complications arising from COVID-19 and workflow implications. P.A.C.E. credit available for participation.*

[See instructions for claiming P.A.C.E. credit ›](#)

[Register here](#)

Understand Early Sepsis Indicator Performance

Register for ISLH 2020 and our on-demand workshop



You're invited to ISLH 2020 and our virtual on-demand workshop. Now through September 25, 2020, join us and your peers online to hear the latest news on Early Sepsis Indicator performance in real-life clinical settings at Lin-Kou Medical Center in Taiwan and ASAN Medical Center in Seoul, Korea.

(Estimated read time: 3 minutes)

[Register here](#)

*Beckman Coulter Inc. is approved as a provider of continuing education programs in the clinical laboratory sciences by the ASCLS P.A.C.E.® Program. These credits are recognized by the State of California. Most programs also provide State of Florida credits (with valid license number). At this time, we cannot issue continuing education credits for those who provide healthcare (or work for an institution that provides healthcare) in Massachusetts or Vermont.

EM-275714-1-0



Having trouble reading this? [View this email in your browser](#) ›

[Privacy policy](#) | [Manage preferences](#) | [Unsubscribe](#)

Beckman Coulter, Inc., 250 S. Kraemer Blvd., P.O. Box 8000, Brea, CA 92821, USA

respective owners.