

YOUR INNOVATIVE LAB SOLUTION

DxONE Inventory Manager

One Less Thing To Worry About

EFFORTLESS MANAGEMENT OF LABORATORY CONSUMABLES

Real-time view of transactions
Instantly gain access to stock positions, product, lot number, quantity, location

Automated order placement for stock replenishment
Generate orders automatically based on your min/max levels



Simplified management

Effortlessly add and remove stock in real time for up-to-date status

Consolidated inventory information

Easily navigate dashboards where all information across your network is readily available

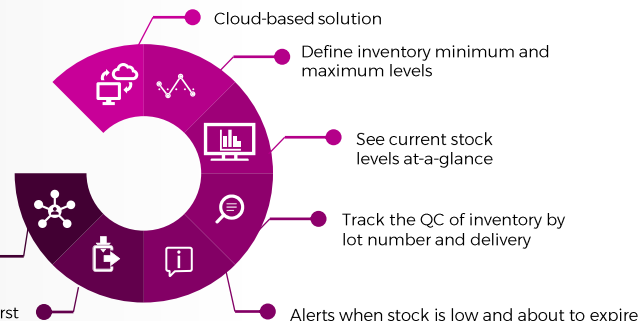
KEY BENEFITS

92%

* reduction in time spent managing inventory

Share and trace stock across a network

Make sure older stock is used first

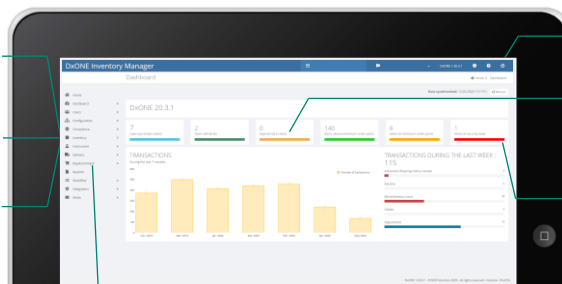


COMPLETE OVERVIEW OF YOUR CURRENT INVENTORY STATUS

Stock levels:
Gain rapid stock status through intuitive RAG (red, amber and green) indicators

Quality check process:
Mark passed QC items for management of QC status

Inventory transactions:
Track items by date for use in calculating consumption



Ordering:
Automatically replenish items based on usage patterns

Dashboard of all consumables managed by the system

Stock position:
Track status of consumables within the laboratory or across your network

Expiration management:
Minimize waste through system-tracked expiration dates

WHAT CUSTOMERS ARE SAYING

"DxONE Inventory Manager is very user friendly. We can quickly and easily see what is in stock. I run a min max every week with a few simply clicks and it orders all the stock we need."

Pauline Muraski, Biochemistry Lead,
University Hospitals of Morecambe Bay
NHS Foundation Trust

"DxONE Inventory Manager is really easy to use and provides a visual display of my stock levels. It's very handy to see all stock which will expire in the next six weeks and when new stock is coming."

Sarah Doherty, Advanced BMS
Automated Clinical Biochemistry
Southampton General Hospital

If you want to know more, please go to: <https://e.beckmancoulter.com/labs-of-the-future-innovative>

*92% reduction in effort per week shown at Owensboro Regional Health Laboratory, site specific results may vary.

© 2020 Beckman Coulter, Inc. All rights reserved. Beckman Coulter, the stylised logo, and the Beckman Coulter product and service marks mentioned herein are trademarks or registered trademarks of Beckman Coulter, Inc. in the United States and other countries.

For Beckman Coulter's worldwide office locations and phone numbers, please visit www.beckmancoulter.com/contact

