

AUTOMATED BODY FLUID ANALYSIS

The Iris iQ200 Body Fluids Module provides a standardized, fully automated method for the analysis of red blood cell (RBC) count and nucleated cell count in cerebrospinal, synovial and serous fluids. Iris' patented Digital Flow Morphology technology isolates particles in body fluids to provide accurate and reproducible results that can be verified on the screen.



Performance

- › View bacteria, crystals* and cellular abnormalities onscreen for verification or review
- › Accurate results through true-count standardization
- › Differentiates RBCs from nucleated cells
- › Linear range of 0-10,000 cells/ μ L
- › Correlates with manual TNC of $r=0.99$ and RBC of $r=0.98^{\dagger}$

Productivity

- › No need to interrupt the analyzer to switch over to body fluid modes
- › No need for body fluid sample batching
- › There is a minimum specimen requirement of 15 μ L, saving valuable specimen for other tests

Value

- › Reduces send-out costs
- › Reduces processing time and labor
- › Archives images for later viewing

Complete body fluids menu

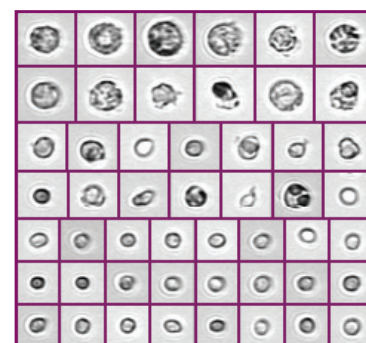
- › Synovial fluid[†]
- › Cerebrospinal fluid
- › Pleural fluid
- › Peritoneal fluid
- › Peritoneal dialysate
- › Peritoneal lavage
- › Pericardial fluid
- › Serous fluids

*Images of bacteria and crystals only come from the diluted portion of the specimen.
[†]Special pretreatment protocol needed.

Body Fluids Module for iQ200 series

Product codes	
800-3704	iQ200 Body Fluids Module Starter Kit (International)
800-3016	iQ200 Body Fluids Module Key Disc
800-3004	iQ200 Body Fluids Synovial Fluids Upgrade
700-3231	iQ200 Body Fluids Rack
700-3225	Rack #25
700-3226	Rack #26
700-3227	Rack #27
700-3228	QC Rack
868-3011	iQ200 Body Fluids Starter Kit barcode labels (individual barcode labels vary by sample type and dilution)
700-3083	iQ200 Body Fluids Quick Reference Guide
810-3008	iQ200 Body Fluids Door Sticker
800-3215	iQ200 Body Fluids Conical Tubes

iQ200 Body Fluids Module consumables	
800-3213	iQ200 Body Fluids Lysing Reagent
800-3219	iQ200 Body Fluids Control Level I and Level II
800-3202	Iris Diluent Pack
800-3102	iQ200 Lamina, four-bottle pack
700-3236	iQ200 Lamina, two-bottle pack



Nucleated and Red Blood Cells



Total Nucleated Cells

**For more information,
visit www.beckmancoulter.com/urinalysis**

References

1. Walker T, Nelson L, Dunphy B, Anderson D and Kickler T; Comparative evaluation of the Iris iQ200 Body Fluid Module with manual hemacytometer count. Am J Clin Pathol. 2009; 131:333-338.

©2020 Beckman Coulter, Inc. All rights reserved. Beckman Coulter, the stylized logo, and the Beckman Coulter product and service marks mentioned herein are trademarks or registered trademarks of Beckman Coulter, Inc. in the United States and other countries.

For Beckman Coulter's worldwide office locations and phone numbers, please visit www.beckmancoulter.com/contact

DS-261604



Iris